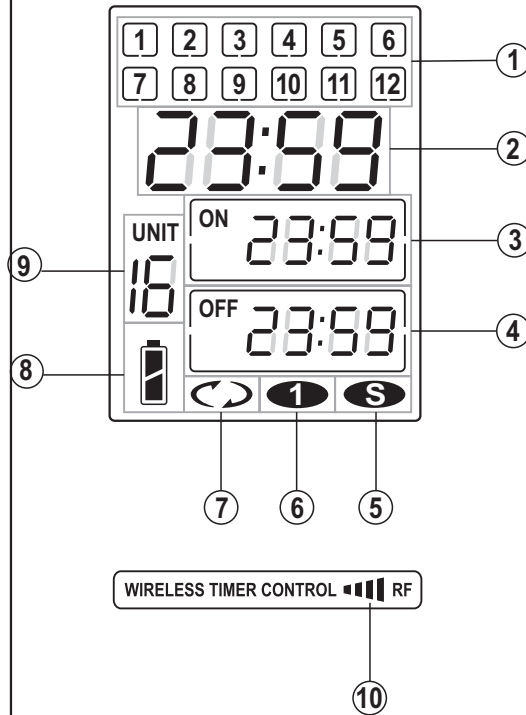
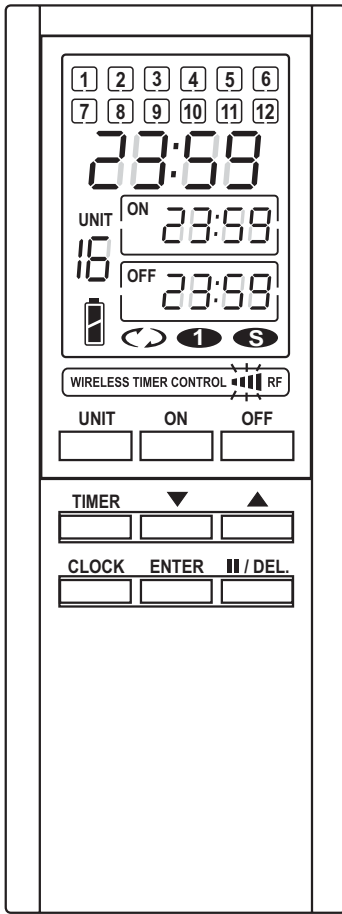


WIRELESS REMOTE TIMER MANUAL

Model No.:TMT-502



1. Memory sets, Max: 12 sets
2. Time: 24 hour display
3. The setting time of indicated receiver for "ON" display
4. The setting time of indicated receiver for "OFF" display
5. For security and anti-burglar
6. Timer setting "ON" and "OFF" at one time mode
7. Timer setting "ON" and "OFF" for daily cycle mode.
8. Battery low display
9. Unit code display; For 16 units of indicated receivers.
10. ON/OFF transmission signal Indicator

BUTTON DESCRIPTION	
UNIT	The select button of unit code on TX
ON	To remote the receiver "ON"
OFF	To remote the receiver "OFF"
TIMER	Timer setting and view button
▲	To select up
▼	To select down
CLOCK	For setting time as the clock
ENTER	Enter and confirm
II / DEL.	Delete and pause function

Function

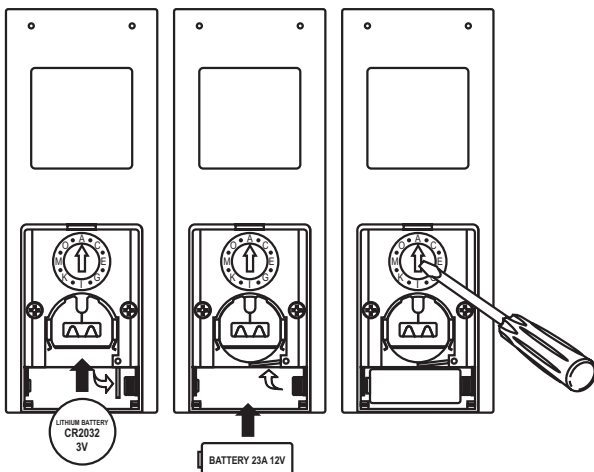
- Wireless Remote Timer
- 12 memory sets for timer; LED power indicator
- Easy to use, convenient and rich you life.
- Different setting modes are selectable: One time, daily, and random Security.

Specification

- Frequency: 433.92MHz
- Battery: 3V CR 2032 Lithium for LCD power
1 x 12v A23 for timer transmission.
- Remote control distance: 30 M

How to use?

REPLACE THE BATTERY



CLOCK SETTING

The Remote Control Timer display the time in 24 hours mode.

Before proceeding the programming the timer, you will need to set the

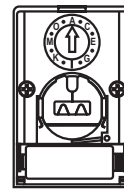
Correct time.

- Press "**CLOCK**" button 3 seconds, the digits on LCD display will be blink.
- Use "▼▲" button to set the hour. Press "**ENTER**" button confirm the correct hour.
- Once again repeat the above action to set the minute and press "**ENTER**" confirm the correct minute.

The timer is programmed.

Timer Setting

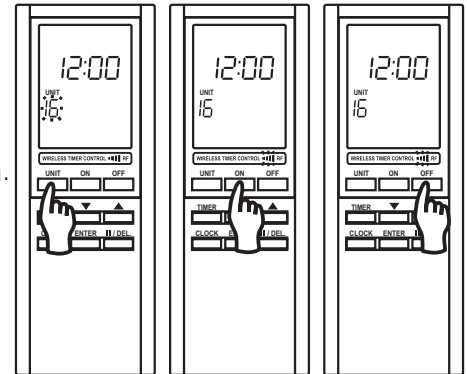
Before timer setting, please adjust the timer house codes as the indicated receiver house code.



One Time Setting

Wireless ON/OFF remote controller

- Press "UNIT" button select to the unit of receiver that you need and press "ENTER" button.
- Press "ON" button, the unit of receiver will turn on, the indicator will show up.
- Press "OFF" button, the unit of receiver will turn off, the indicator will show up.



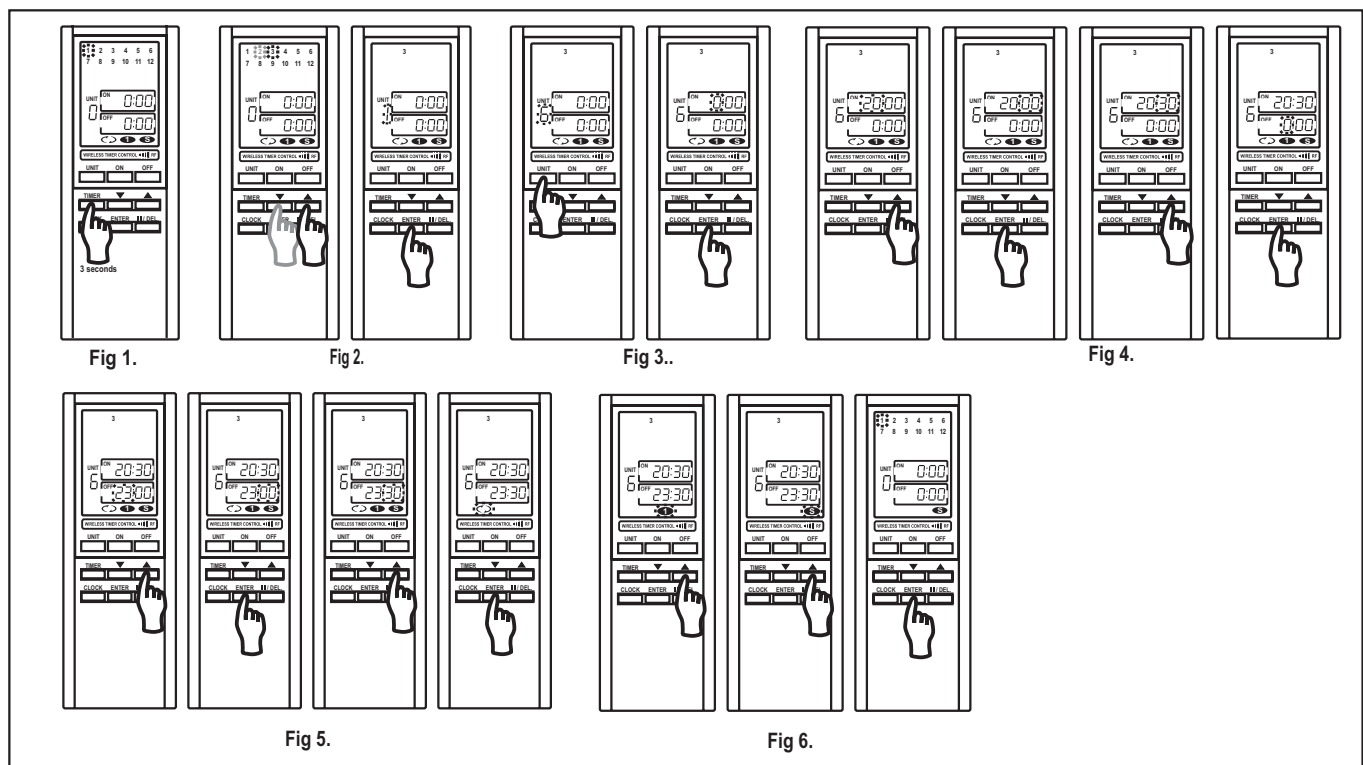
Wireless Dimmer Remote Controller

- Press "UNIT" button select to the unit of receiver that you need and press "ENTER" button.
- Press "ON" button twice for dimming. The receiver for lighting will turn un; the indicator will show up.
- Press "ON" button again. The receiver of light stops at the brightness that you need. The indicator will show up.
- Press "OFF" button, the unit of receiver will turn off, the indicator will show up.

Daily timer Setting

- Press "TIMER" 3 seconds, the digits on LCD display will show up (Fig 1.)
- The memory sets will blink. Using "▼▲" button to select on that you need and press "ENTER" button to confirm (Fig 2.)
- Press "UNIT" button and choose that you need. and press "ENTER"button and then the ON digits on LCD display will blink(Fig 3), please use "▼▲" button to select the hur and press "ENTER" button to confirm (Fig 4).
- Using "▼▲" button to select the min and press "ENTER" button to confirm(Fig 4).
- The OFF digits on LCD display will blink, please use "▼▲" button to select the hur and press "ENTER" button to confirm. Using "▼▲" button to select the min and press "ENTER" button to confirm(Fig 5).
- Select the mode: use "▼▲" button to select the mode that you need and press"ENTER" button to confirm and program (Fig 6).

Now the timer is programmed now.



More than one time Control

You can set max 12 times for the indicated receivers in a day. For example:

The memory set totally has 12 sets .

1. If you have 3 receivers, and you set up 2 times "ON/OFF" on 1 receiver. The memory sets has rest 10 sets. You can set up 10 times in other indicated receivers.
2. If you have 4 receivers. You can set up 1 time "ON/OFF" in indicated receiver A. Set up 2 times "ON/OFF" on indicated receiver B. Then you will rest 9 sets available to set up.


Pause Function of Timer

- Press "TIMER" button 3 seconds, use "▼▲" button to select the set number that you need on display.
- Press "||" button and press "ENTER" the pause function start.
- Backing to the main menu, the selected set will be blocked.
- Press "||" button again and press "ENTER" button, return to the timer function.

Delete Function of Timer

- Press "TIMER" button 3 seconds, use "▼▲" button to select the set number that you need on display.
- Press "||\DEL." button for 3 seconds, the setting time and unit on display will blink.
- Press "ENTER" button, the setting has deleted.

Troubleshooting

 Low power	Replace fresh 3V CR2032 Lithium
Digits not clear	1.Please check the LCD battery power 2.After replace the fresh battery, the displace doesn't show, please send it back to the agent.
No display	1.Please check the LCD battery power 2.After replace the fresh battery, the displace doesn't show, please send it back to the agent.
No indicator signal	Please check 12 V battery.
Short distance	Please check the battery power and replace fresh battery.

Note:

- Do not expose this product to excessive heat, direct sunlight or moisture.
- Do not drop this product from the upside
- If the Remote Control Timer is not used for a period of time, the battery may become flat.